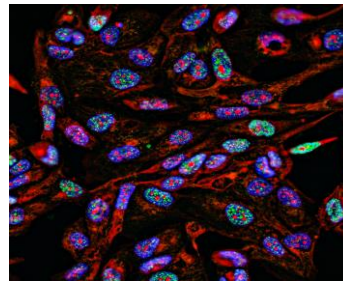


Nonlinear Optics



Life Sciences



## COMPACT HIGH-POWER PICOSECOND LASER

< 10 ps / High power / High repetition rate / Narrow linewidth

ANTARES is an advanced picosecond laser producing high average power at high repetition rates up to 80 MHz with narrow linewidth in a very compact and robust format.

ANTARES series offers average power from 5 W up to 40 W at 1030 nm or 1064 nm. Other wavelengths are also available in the green or UV through frequency conversion.

# TECHNICAL SPECIFICATIONS\*

General	ANTARES 1035-10	ANTARES 1035-20	ANTARES 1035-30
Wavelength	1035 +/- 5 nm (other wavelengths available)		
Average power	> 10 W	> 20 W	> 30 W
Pulse duration (1)	< 10 ps		
Repetition rate (3)	80 +/- 2 MHz		
Energy per pulse (4)	> 125 nJ	> 250 nJ	> 375 nJ
<b>Beam parameters</b>			
M <sup>2</sup> (5)	< 1.2		
Beam diameter (6)	1.5 +/- 0.2 mm		
Divergence (7)	< 1 mrad		
Ellipticity (8)	> 0.9		
Output beam	Collimated		
Polarization	Vertical, > 100:1		
<b>Stability</b>			
Power stability RMS (9)	< 1%		
Pulse to pulse stability RMS (10)	< 1%		
<b>Electrical</b>			
External interfaces	RS-232, USB, TCP/IP		
Synchronization output	TTL		
Software interfaces	GUI, RS-232 serial communication protocol		
Power consumption	< 150 W		
Cooling	Air		
<b>Mechanical</b>			
Laser head dimensions	397 x 339 x 131 mm		
Laser head weight	13 kg		
Control unit	19"/ 3U rack		
Control unit weight	7.5 kg		
Umbilic length	3 m		
<b>Environmental</b>			
Operational temp range	19-30°C		
Storage temp range	0-40°C		
Operational max altitude	2000 m		
Operational humidity	Non condensing		
Storage humidity	80% RH		
<b>Options</b>			
Wavelengths	1064 nm or other		
Repetition rate (11)	Any fixed frequency from 20 MHz to 80 MHz		
Pulse picker	To change repetition rate from 1 MHz to 40 MHz		
Power modulation	To access repetition rates below 1 MHz and power modulation		
Frequency conversion	517 nm or computer selectable 517/1035 nm		

- (1) Sech<sup>2</sup> fit, autocorrelator measurement  
 (2) User adjustable group delay dispersion compensation  
 (3) Other value upon request  
 (4) Energy defined as the ratio between average power and repetition rate  
 (5) M<sup>2</sup> measurement according 4Sigma method  
 (6) Beam diameter at output port at 1/e<sup>2</sup>  
 (7) Half divergence, far field measurement, ISO method  
 (8) Minor over major diameter ratio, far field measurement  
 (9) Over 12 hours or more, at room temperature +/-1°C  
 (10) Pulse to pulse stability measurement performed with oscilloscope and photodiode  
 (11) Change in repetition rate may affect average output power. Energy will be unchanged



CAUTION  
 CLASS 4 VISIBLE & INVISIBLE LASER  
 RADIATION WHEN OPEN  
 AVOID EYE OR SKIN EXPOSURE TO  
 DIRECT OR SCATTERED RADIATION

\* This information is subject to modifications without prior notice.

Contact : +33 (0)5 57 97 74 70 / info@spark-lasers.com

Version: May 2021

www.spark-lasers.com